

eclectica  
contemporary

Moving backwards  
is still moving

Boni  
& Wes

Opening  
06.08.2020

Boni & Wes

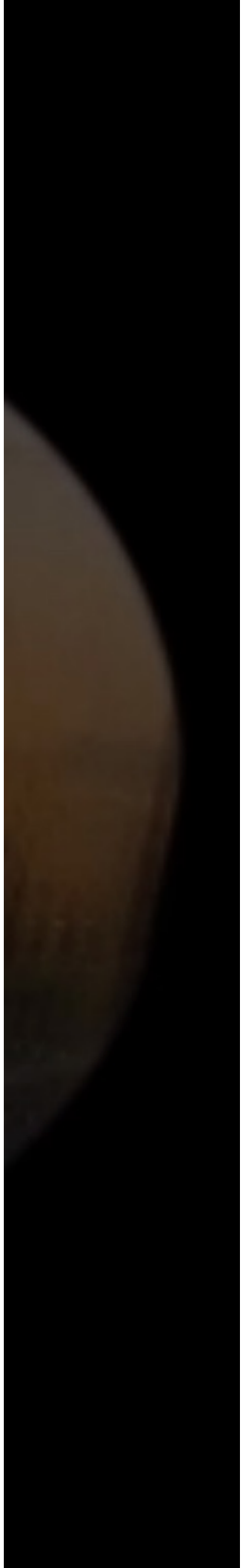
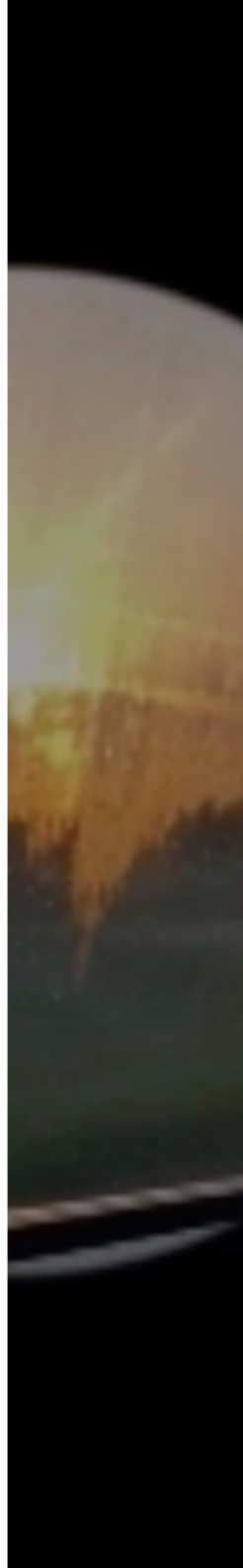
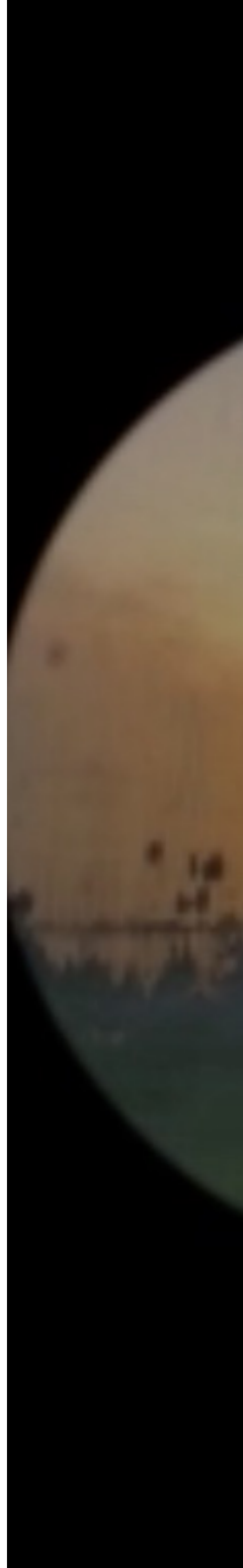
# Boni

Moving backwards still still moving functions as a documentation of the unremitting fluctuation of movement and stillness within the universe, sameness and change on small or larger scales, and a determination to draw meaning from hopelessness and defeat.

Dubbed 'The Great Pause', the national lockdown has given us time to stop and evaluate what was working and what no longer serves us and the communities we are a part of. This proposed study seeks to contrast and intertwine moments highlighting the earth shattering change caused by COVID-19 and the continued loss of black life with the monotony of repeated daily routines performed in the same space alongside the same person.

Boni & Wes

# wes



# Boni & Wes

Wes Leal (b. 1998, Johannesburg) is a gender fucked visual artist working across a range of mediums such as painting, sculpture, video making, and performance. His work explores themes of masculinity and sex through the lens of his own experience as a small white boy. Wes' work challenges preconceived notions of masculinity fed to society through the media by contrasting its imagery with a body that straddles masculinity and femininity beyond society's comfort.

Boni Mnisi (b. Johannesburg) is a Cape Town based multi-disciplinary artist and cultural curator working in photography, video, sculpture, and animation. Her work explores the vast dimensions of Black womanhood and queer identity to expose pervasive power relations that pervade the art world and society more widely.



*moving backwards is still moving*

2020

video still

00:01:00

*moving backwards is still moving*  
2020  
video still  
00:01:00





*moving backwards is still moving*

2020

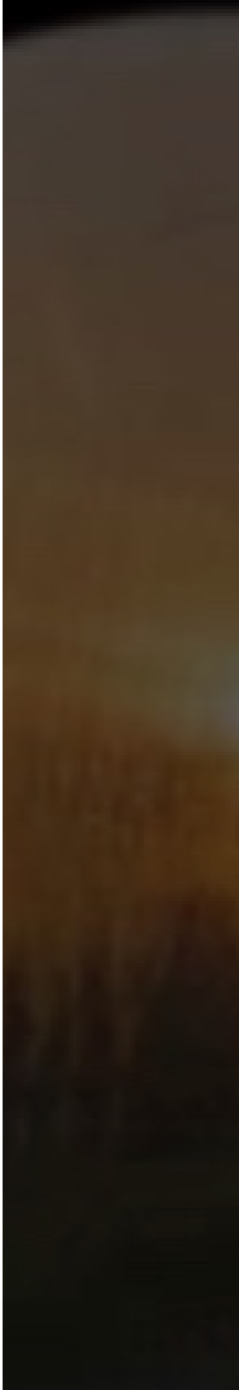
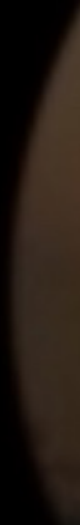
video still

00:01:00



*moving backwards is still moving*  
2020  
video still  
00:01:00





eclectica  
contemporary

Boni & Wes

*Moving Backwards is still moving*

August 2020

Eclectica Contemporary

69 Burg Street, Cape Town

[info@eclecticacontemporary.co.za](mailto:info@eclecticacontemporary.co.za)

[www.eclecticacontemporary.co.za](http://www.eclecticacontemporary.co.za)

+27 21 422 4145

Gallery Director | Shamiela Tyer

Gallery Curator | Clare Patrick

Show Curator | Alice Toich

Catalogue Design | Stephani Müller